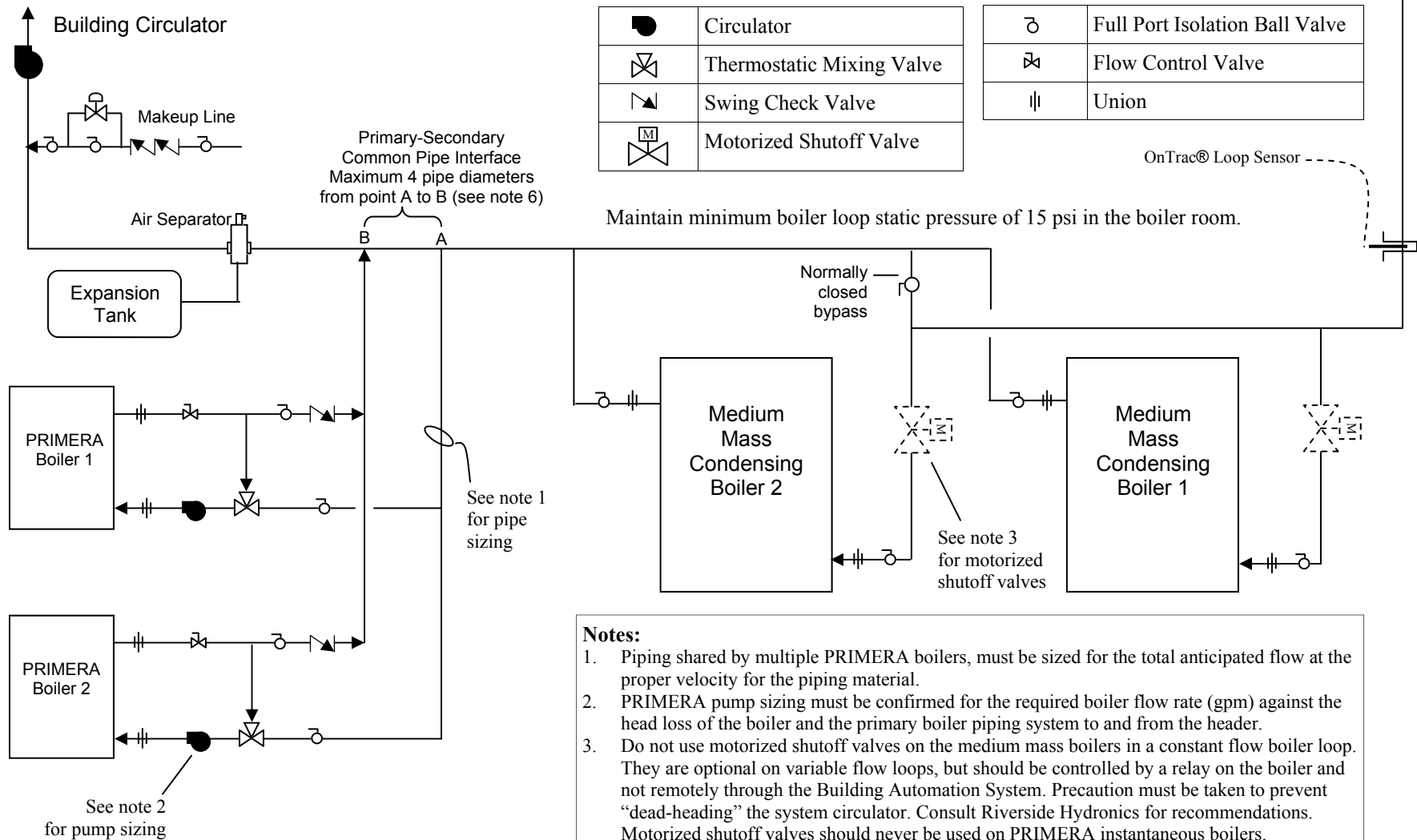


## Piping Schematic for EMBLEM® Hybrid Boiler System Two Medium Mass Condensing Boilers and Two PRIMERA® Instantaneous Non-Condensing Boilers



### Notes:

1. Piping shared by multiple PRIMERA boilers, must be sized for the total anticipated flow at the proper velocity for the piping material.
2. PRIMERA pump sizing must be confirmed for the required boiler flow rate (gpm) against the head loss of the boiler and the primary boiler piping system to and from the header.
3. Do not use motorized shutoff valves on the medium mass boilers in a constant flow boiler loop. They are optional on variable flow loops, but should be controlled by a relay on the boiler and not remotely through the Building Automation System. Precaution must be taken to prevent "dead-heading" the system circulator. Consult Riverside Hydronics for recommendations. Motorized shutoff valves should never be used on PRIMERA instantaneous boilers.
4. Medium-mass condensing boilers should be piped reverse return with direct flow-through from the building loop. PRIMERA boilers must be piped primary-secondary with a dedicated circulator installed for each boiler.
5. Depending upon maximum building flow, larger return and supply fittings (factory option) may be a consideration for the medium mass boilers.
6. Whenever PRIMERA boilers are operating, the total building flow must be 125% of the required flow of all PRIMERA boilers operating at that time.
7. Refer to individual boiler installation manuals for more details.