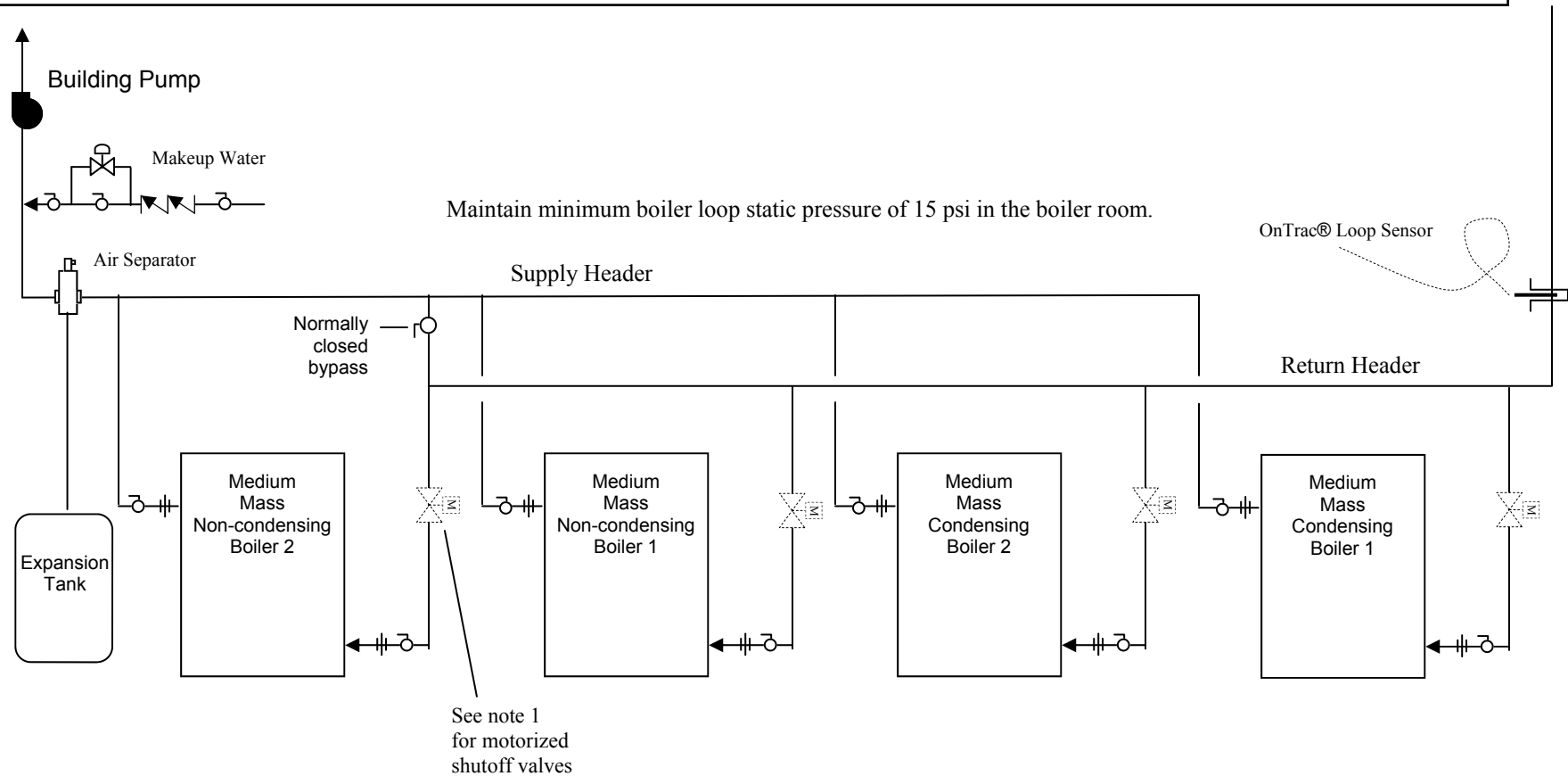


Piping Schematic for EMBLEM® Hybrid Boiler System Medium Mass Condensing Boilers and Medium Mass Non-Condensing Boilers



| | |
|---|--------------------------------|
| ○ | Full Port Isolation Ball Valve |
| | Union |

Notes:

1. Do not use motorized shutoff valves on the medium mass boilers in a constant flow boiler loop. They are optional on variable flow loops, but should be controlled by a relay on the boiler and not remotely through the Building Automation System. Precaution must be taken to prevent “dead-heading” the system circulator. Consult Riverside Hydronics for recommendations.
2. Medium-mass condensing boilers should be piped reverse return with direct flow-through from the building loop.
3. Refer to individual boiler installation manuals for more details.