

VT3  
VERTICAL FIRETUBE, NON-CONDENSING WATER BOILER

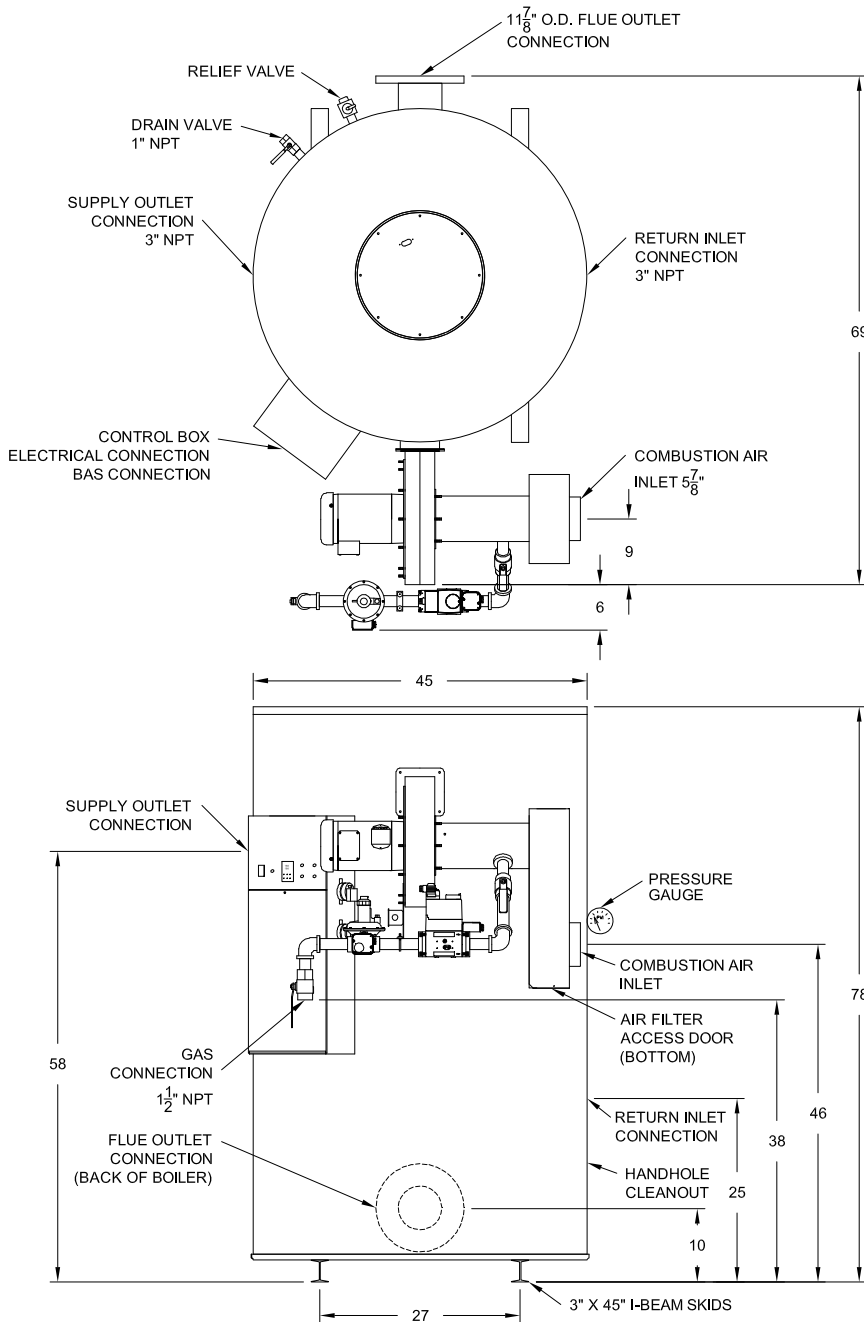
Full modulation  
< 20 ppm NOx

**Model: 2000 WB 250A-IF**

Max. Input Btu/h	2,000,000
* Max. Output Btu/h	1,680,000
** Minimum Inlet Flow Gas Pressure	4.5" W.C.
Maximum Static Gas Pressure	14" W.C.

\* Output per DOE, 10 CFR 431

Shipping Wt - Lbs	2220
Operating Wt - Lbs	3720



**Standard Electrical**

120V, 1Ø, 60 Hz., 15 amp circuit

**Optional Electrical**

240V, 1Ø, 60 Hz., 10 amp circuit  
120V control circuit

208/230V, 3Ø, 60 Hz. 6 amps  
480V, 3Ø, 60 Hz. 3.0 amps  
120V control circuit required  
120V transformer optional

**Venting**

Category I Type B. Vent should not be sized based only upon vent connection diameter at the appliance. For proper vent sizing and design, refer to the National Fuel Gas Code. Use "FAN" rating.

**Inlet Combustion Air**

Up to 100 eq. ft. using 6" PVC or galvanized vent pipe. Longer lengths, ETL listed w/larger diameters, see I&M.

**\*\* Alternate Gas Pressure**

For < 4.5"W.C., consult factory

**Minimum Service Clearances**

18" from sides, 24" from front and top

**Emissions**

399,000 to 900,000 BTU  
< 20 ppm NOx



RIVERSIDE HYDRONICS, LLC · FORT WORTH, TEXAS · (800) 990-5918

www.riversidehydronics.com



34-812 4.11