

**VT3
VERTICAL FIRETUBE, NON-CONDENSING WATER BOILER**

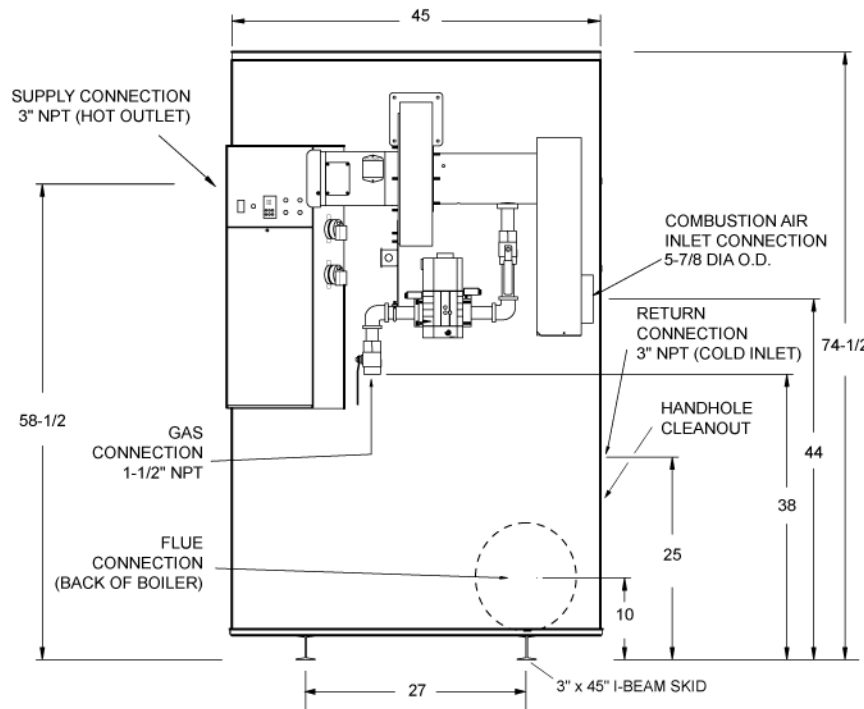
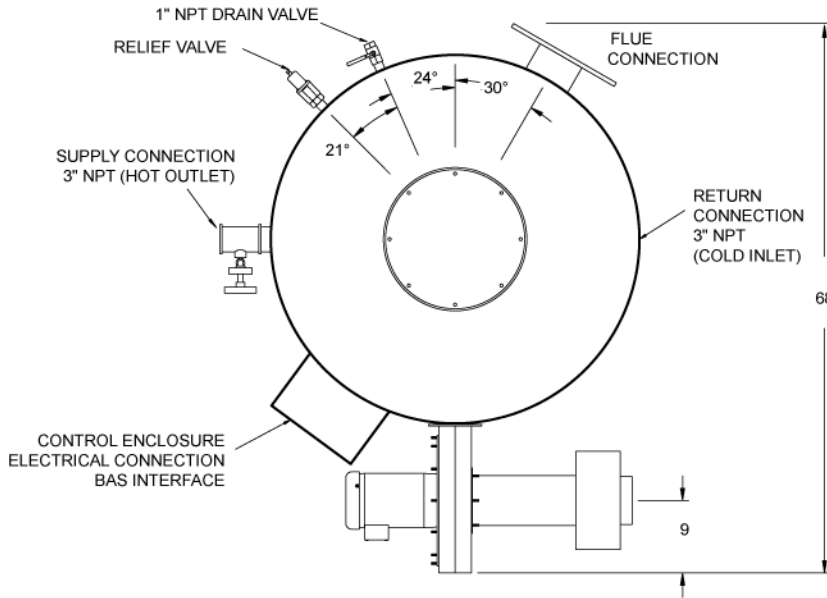
Full modulation
< 20 ppm NOx

Model: 1800 WB 250A-IF

Max. Input Btu/h	1,800,000
* Max. Output Btu/h	1,510,000
** Minimum Inlet Flow Gas Pressure	4.5" W.C.
Maximum Static Gas Pressure	14" W.C.
Gas Connection - NPT	1-1/2

*** Flue Connection Diameter	12"
Shipping Wt - Lbs	2190
Operating Wt - Lbs	3300

* Output per DOE, 10 CFR 431



Standard Electrical
120V, 1Ø, 60 Hz., 30 amp circuit

Optional Electrical
240V, 1Ø, 60 Hz., 15 amp circuit
120V control circuit
208/230V, 3Ø, 60 Hz. 9 amps
480V, 3Ø, 60 Hz. 4.5 amps
120V control circuit required
120V transformer optional

***** Venting**
Category I Type B.
Entire vent run should not be sized based upon the flue connection diameter. For proper vent sizing and design, refer to the National Fuel Gas Code. Use "FAN" rating.

Inlet Combustion Air
Up to 100 eq. ft. using 6" PVC or galvanized vent pipe and 0.0" to -1.0" WC pressure

****Alternate Gas Pressure**
For < 4.5" W.C., consult factory

Minimum Clearances
24" from front and top
8" from sides and rear

