

Centauri[®] Plus Condensing Boiler

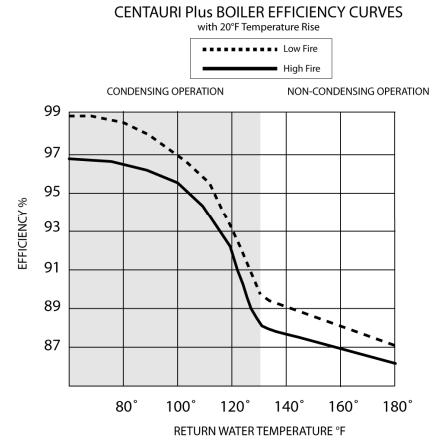
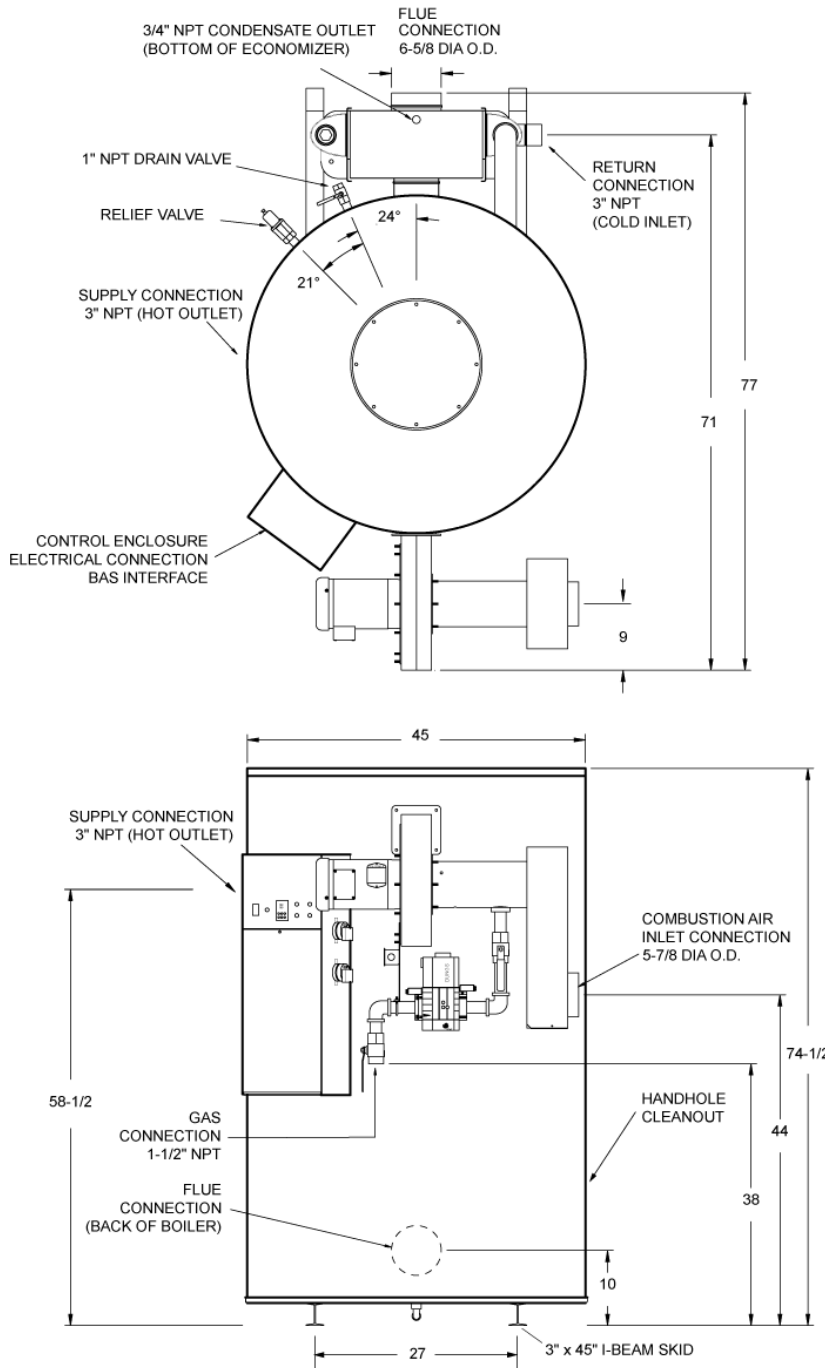
Model: 1800 WBX 250A-IFC

Full modulation
< 10 ppm NOx throughout turndown

| | |
|--|-----------|
| Max. Input Btu/h | 1,800,000 |
| Max. Output Btu/h, E _T = 94% | 1,688,000 |
| Max. Output Btu/h (80°F - 100°F), E _T = 96% | 1,728,000 |
| ** Minimum Inlet Flow Gas Pressure | 4.5" W.C. |
| Maximum Static Gas Pressure | 14" W.C. |

| | |
|------------------------------|-------------|
| Shipping Wt - Lbs | 2450 |
| Operating Wt - Lbs | 3560 |
| Std. pressure drop @ 20°F ΔT | 2.9 Ft. Hd. |
| Std. pressure drop @ 30°F ΔT | 1.2 Ft. Hd. |
| Std. pressure drop @ 40°F ΔT | 0.6 Ft. Hd. |

* Output per DOE, 10 CFR 431



Standard Electrical
120V, 1Ø, 60 Hz., 30 amp circuit

Optional Electrical
 240V, 1Ø, 60 Hz., 15 amp circuit
 120V control circuit
 208/230V, 3Ø, 60 Hz. 9 amps
 480V, 3Ø, 60 Hz. 4.5 amps
 120V control circuit required.
 120V transformer optional.

Venting
Use an ETL, UL or ULC listed Category IV, 6" metal vent minimum distance 5 ft. maximum distance 100 eq. ft. and maximum 1.3" WC pressure

Inlet Combustion Air
Up to 100 eq. ft. using 6" PVC or galvanized vent pipe and 0.0" to -1.0" WC pressure

**** Alternate Gas Pressure**
For < 4.5" W.C., consult factory

Minimum Clearances
24" from front and top
8" from sides and rear

