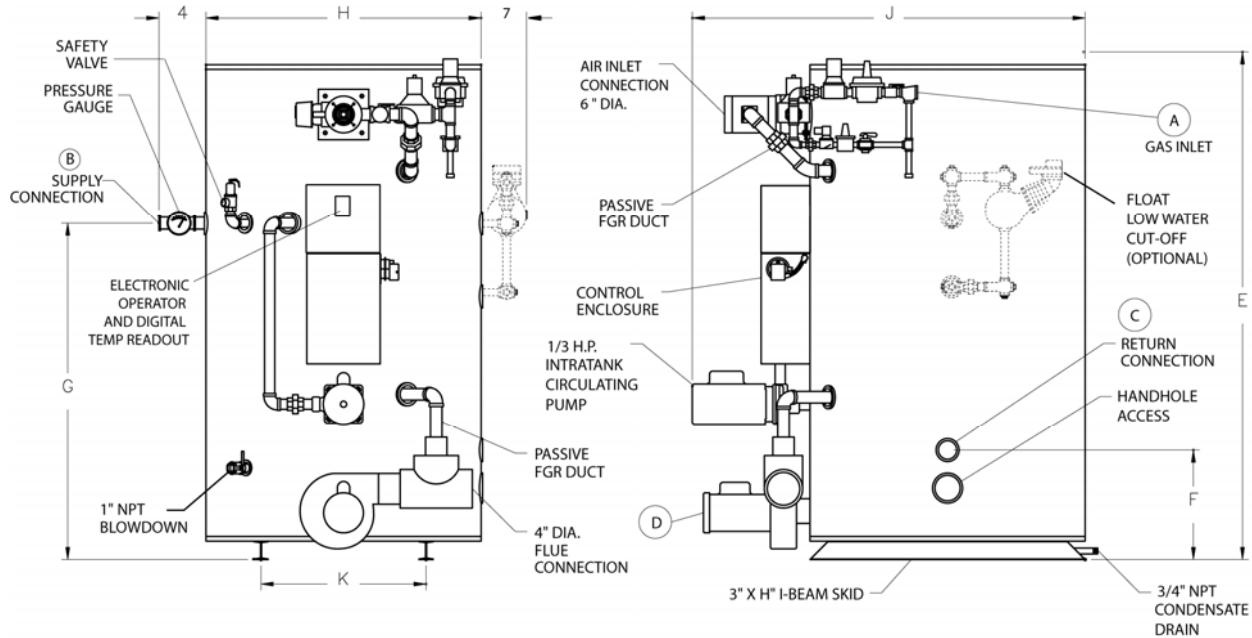


**EPVL SERIES • LOW NO<sub>x</sub> • CONDENSING WATER BOILER**  
**399,000 to 1,000,000 Btu/h (11 to 28 hp)**

	<b>MODEL NUMBER</b>	<b>11 WB 125A-PVL</b>	<b>16 WB 125A-PVL</b>	<b>21 WB 250A-PVL</b>	<b>28 WB 250A-PVL</b>
	Boiler horsepower *	11	16	21	28
	Input – Btu/h	399,000	565,000	750,000	1,000,000
	Output – Btu/h (per ANSI Z21.13 *)	371,000	525,000	697,500	930,000
	Minimum gas inlet pressure – "W.C.	4.5	4.5	4.5	4.5
A	Gas inlet - NPT	3/4	1	1	1-1/4
B	Hot outlet - NPT	2	2	3	3
C	Return inlet - NPT	2	2	3	3
D	Induced – draft blower motor - hp	1/3	1/3	1/2	3/4
E	Overall height	79	79	81	81
F	Boiler water return	18	18	20	20
G	Boiler water supply	55	55	57	57
H	Jacket diameter	34-1/2	34-1/2	45	45
J	Overall depth	54	54	63	63
K	Distance between skids	23	23	27	27
	Blower motor amps @ 120V, 1Ø, 60 hz	6	6	8	11
	Circulating pump amps @ 120V, 1Ø, 60 hz	8	8	8	7
	Total amps @ 120V	16	16	18	20
	Approximate shipping weight – lbs	1560	1660	2190	2400
	Approximate operating weight – lbs	2280	2330	3606	3628

\* Actual output varies with changes in supply and return water temperature. Output shown is at maximum efficiency.



- 11 thru 21 hp rated for 500 equivalent ft. of 6" vent & 100 equivalent ft. of 4" vent.  
28 hp rated for 390 equivalent ft. of 6" vent & 50 equivalent ft. of 4" vent.
- Requires customer supplied venting; 4-inch "Safety Vent" manufactured by Heat-Fab. Single-wall.
- Rated for 100 equivalent ft. of remote combustion air duct. (Each elbow equals 5 feet)
- Requires customer supplied remote combustion air duct; 6" PVC sewer and drain or 6" single-wall galvanized.

- Maximum static inlet gas pressure is 14" W.C.  
**For pressures outside this range, consult the factory.**
- See Form 34-603 for standard and optional accessories.
- Unless otherwise specified, dimensions are in inches.
- Intra-tank circulating pump operates only during firing cycle.
- All standard equipment is designed for 120V, 60 Hz. operation.
- This product complies with ASHRAE 90.1.
- All electrical components are UL listed or recognized and/or CSA certified.
- **RIVERSIDE HYDRONICS RESERVES THE RIGHT TO CHANGE THE DESIGN AND SPECIFICATION WITHOUT NOTICE.**