

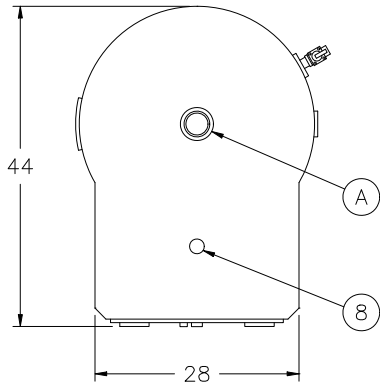
MODEL NUMBER	18 EWB 85A-E	36 EWB 85A-E	54 EWB 85A-E	72 EWB 85A-E	90 EWB 85A-E	108 EWB 85A-E
Kilowatts	18	36	54	72	90	108
Input - MBtu/h	62	123	180	250	310	370
Nominal gallons storage	85	85	85	85	85	85
A Boiler water supply *	2" NPT	2" NPT	2" NPT	2" NPT	2" NPT	2" NPT
B Boiler water return *	2" NPT	2" NPT	2" NPT	2" NPT	2" NPT	2" NPT
Shipping weight	480	490	500	510	520	530
Operating weight	1190	1200	1210	1220	1230	1240

\* Couplings are rated at 3000#.

For voltage and electrical connections, see form 34-653.  
For equipment listing, see form 34-646.

### DRAWING CALL OUTS:

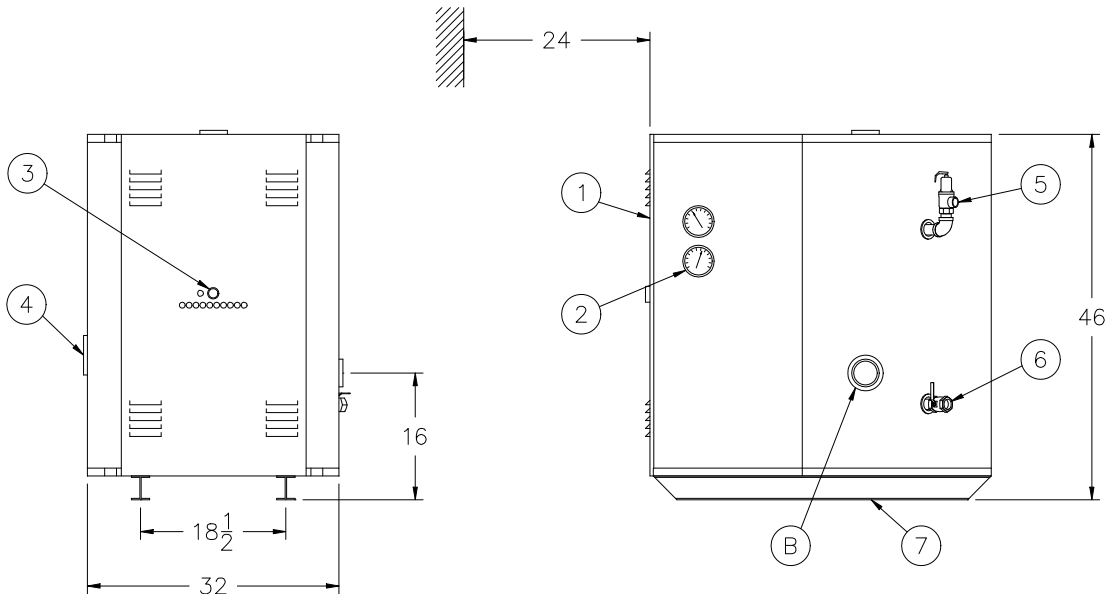
1. Controls and electrical enclosure
2. Dial pressure and temperature gauges
3. Control switch and fuse
4. Handhole cleanout
5. ASME-rated safety valve
6. Blowdown - 1" NPT
7. 3" I-Beam skid
8. Electrical entry



### NOTES:

80 watts/in<sup>2</sup> elements are standard. For boilers with 40 watts/in<sup>2</sup> elements, substitute FWB for EWB in the model number. The kilowatts and model number prefix will be reduced to one-half that of 80 watts/in<sup>2</sup> models.

**RIVERSIDE HYDRONICS RESERVES THE RIGHT TO CHANGE THE DESIGN AND SPECIFICATION WITHOUT NOTICE.**



### MINIMUM CLEARANCE

6" FROM SIDES, REAR AND TOP, 24" FROM FRONT.  
ADDITIONAL CLEARANCE FOR SERVICE IS RECOMMENDED.