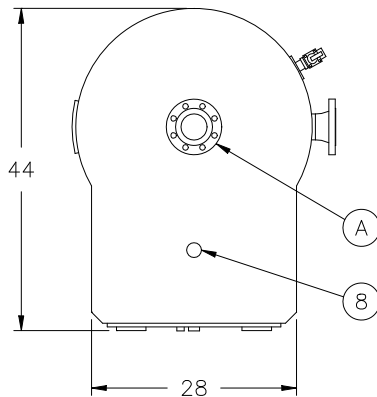


	MODEL NUMBER	126 EWB 125A-E	144 EWB 125A-E	162 EWB 125A-E	180 EWB 125A-E	198 EWB 125A-E	216 EWB 125A-E
	Kilowatts	126	144	162	180	198	216
	Input - MBtu/h	430	490	550	610	680	740
	Nominal gallons storage	125	125	125	125	125	125
A	Boiler water supply *	3" Flange	3" Flange	3" Flange	3" Flange	3" Flange	3" Flange
B	Boiler water return *	3" Flange	3" Flange	3" Flange	3" Flange	3" Flange	3" Flange
	Shipping weight	580	590	600	610	620	630
	Operating weight	1620	1630	1640	1650	1660	1670

* Flanges are rated at 150#.
For voltage and electrical connections, see form 34-653.
For equipment listing, see form 34-646.



DRAWING CALL OUTS:

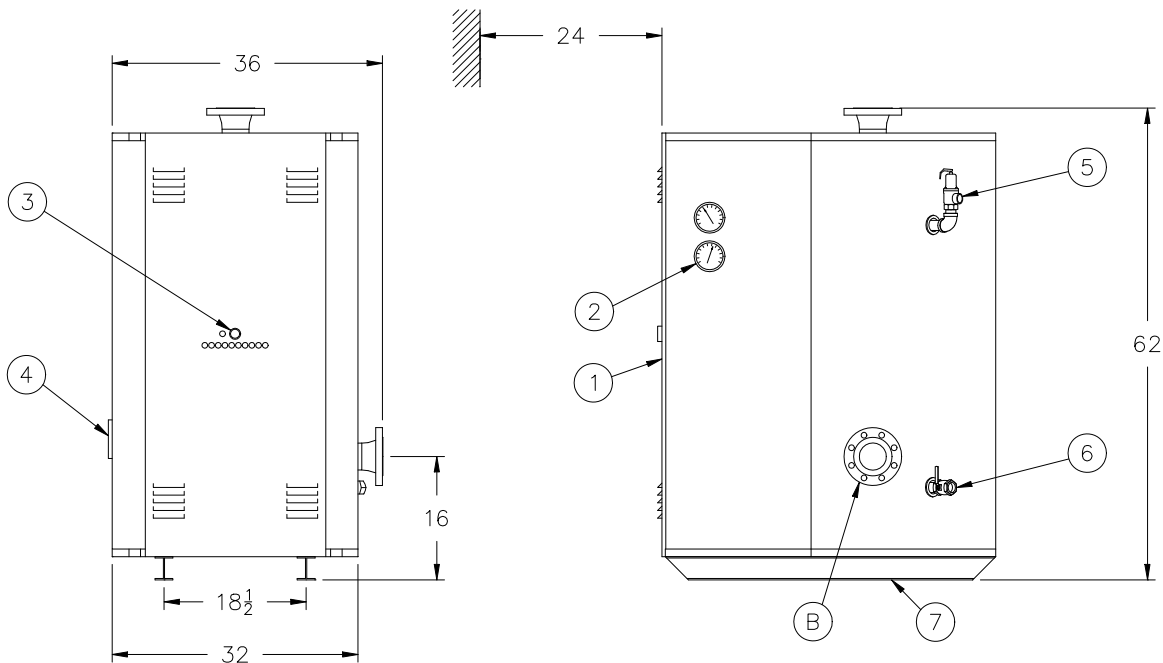
1. Controls and electrical enclosure
2. Dial pressure and temperature gauges
3. Control switch and fuse
4. Handhole cleanout
5. ASME-rated safety valve
6. Blowdown - 1" NPT
7. 3" I-Beam skid
8. Electrical entry



NOTES:

80 watts/in² elements are standard. For boilers with 40 watts/in² elements, substitute FWB for EWB in the model number. The kilowatts and model number prefix will be reduced to one-half that of 80 watts/in² models.

RIVERSIDE HYDRONICS RESERVES THE RIGHT TO CHANGE THE DESIGN AND SPECIFICATION WITHOUT NOTICE.



MINIMUM CLEARANCE

6" FROM SIDES, REAR AND TOP, 24" FROM FRONT.
ADDITIONAL CLEARANCE FOR SERVICE IS RECOMMENDED.