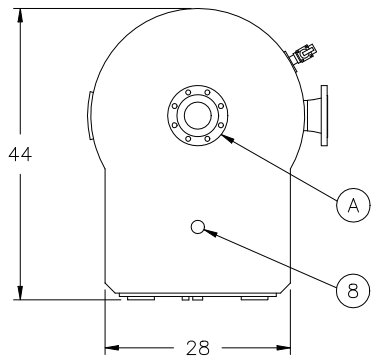


| MODEL NUMBER            | 234 EWB 150A-E | 252 EWB 150A-E | 270 EWB 150A-E | 288 EWB 150A-E | 306 EWB 150A-E | 324 EWB 150A-E | 342 EWB 150A-E | 360 EWB 150A-E |
|-------------------------|----------------|----------------|----------------|----------------|----------------|----------------|----------------|----------------|
| Kilowatts               | 234            | 252            | 270            | 288            | 306            | 324            | 342            | 360            |
| Input - MBtu/h          | 800            | 860            | 920            | 980            | 1040           | 1110           | 1170           | 1230           |
| Nominal gallons storage | 150            | 150            | 150            | 150            | 150            | 150            | 150            | 150            |
| A Boiler water supply * | 4" Flange      | 4" Flange      | 4" Flange      | 4" Flange      | 4" Flange      | 4" Flange      | 4" Flange      | 4" Flange      |
| B Boiler water return * | 4" Flange      | 4" Flange      | 4" Flange      | 4" Flange      | 4" Flange      | 4" Flange      | 4" Flange      | 4" Flange      |
| Shipping weight         | 680            | 690            | 700            | 710            | 720            | 730            | 740            | 750            |
| Operating weight        | 1930           | 1940           | 1950           | 1960           | 1970           | 1980           | 1990           | 2000           |

\* Flanges are rated at 150#.

For voltage and electrical connections, see form 34-653.

For equipment listing, see form 34-646.



### DRAWING CALL OUTS:

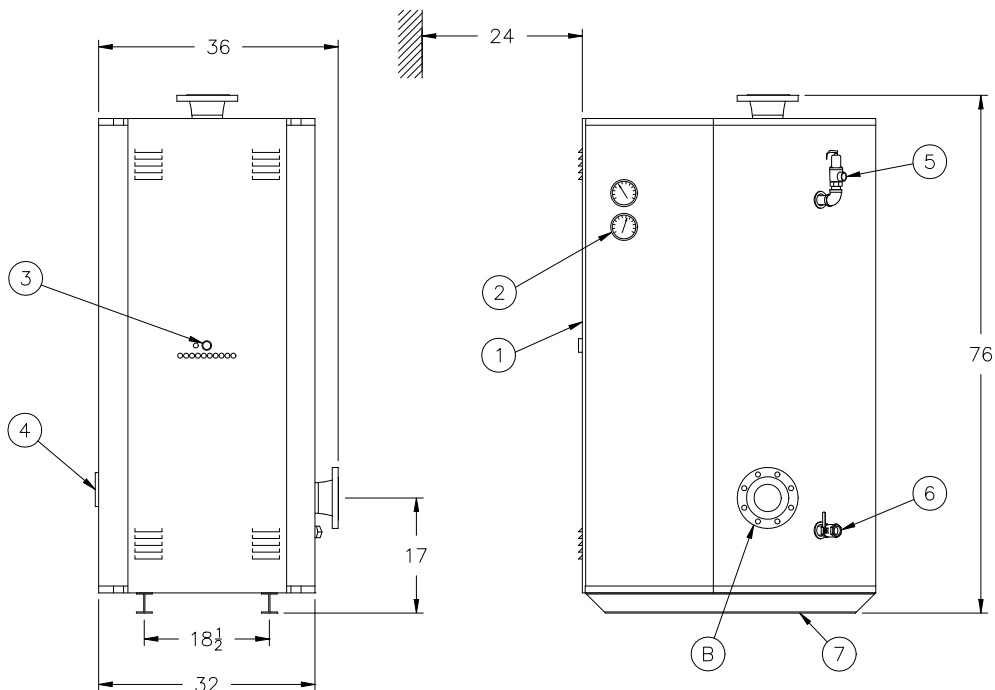
1. Controls and electrical enclosure
2. Dial pressure and temperature gauges
3. Control switch and fuse
4. Handhole cleanout
5. ASME-rated safety valve
6. Blowdown - 1" NPT
7. 3" I-Beam skid
8. Electrical entry



### NOTES:

80 watts/in<sup>2</sup> elements are standard. For boilers with 40 watts/in<sup>2</sup> elements, substitute FWB for EWB in the model number. The kilowatts and model number prefix will be reduced to one-half that of 80 watts/in<sup>2</sup> models.

**RIVERSIDE HYDRONICS RESERVES THE RIGHT TO CHANGE THE DESIGN AND SPECIFICATION WITHOUT NOTICE.**



### MINIMUM CLEARANCE

6" FROM SIDES, REAR AND TOP, 24" FROM FRONT.  
ADDITIONAL CLEARANCE FOR SERVICE IS RECOMMENDED.