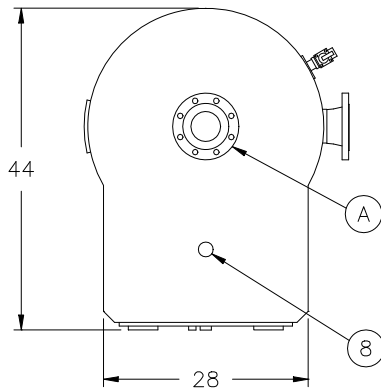


MODEL NUMBER	378 EWB 200A-E	396 EWB 200A-E	414 EWB 200A-E	432 EWB 200A-E	450 EWB 200A-E	468 EWB 200A-E
Kilowatts	378	396	414	432	450	468
Input - MBtu/h	1290	1350	1410	1470	1540	1600
Nominal gallons storage	200	200	200	200	200	200
A Boiler water supply *	4" Flange	4" Flange	4" Flange	4" Flange	4" Flange	4" Flange
B Boiler water return *	4" Flange	4" Flange	4" Flange	4" Flange	4" Flange	4" Flange
Shipping weight	840	850	860	870	880	890
Operating weight	2510	2520	2530	2540 </td <td>2550</td> <td>2560</td>	2550	2560

* Flanges are rated at 150#. For voltage and electrical connections, see form 34-653. For equipment listing, see form 34-646.

DRAWING CALL OUTS:

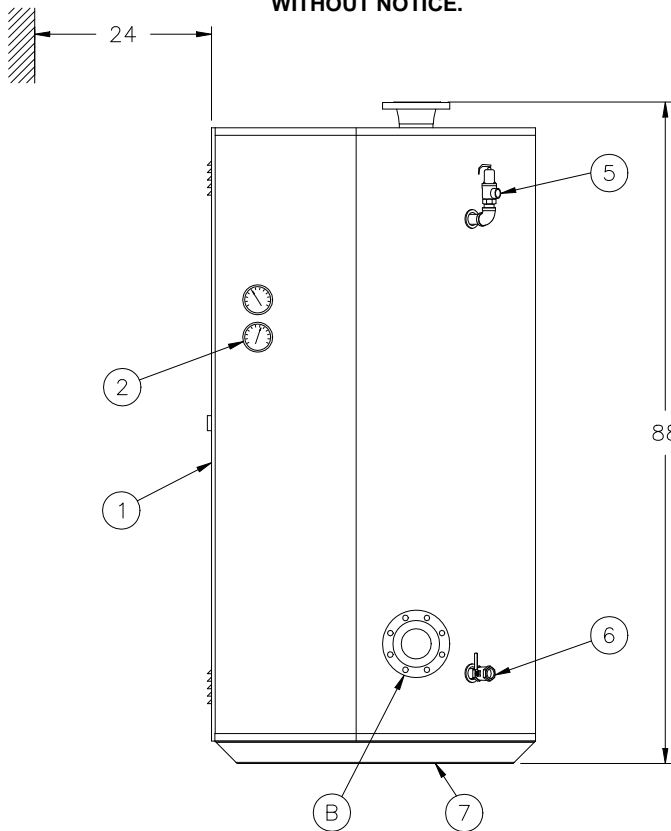
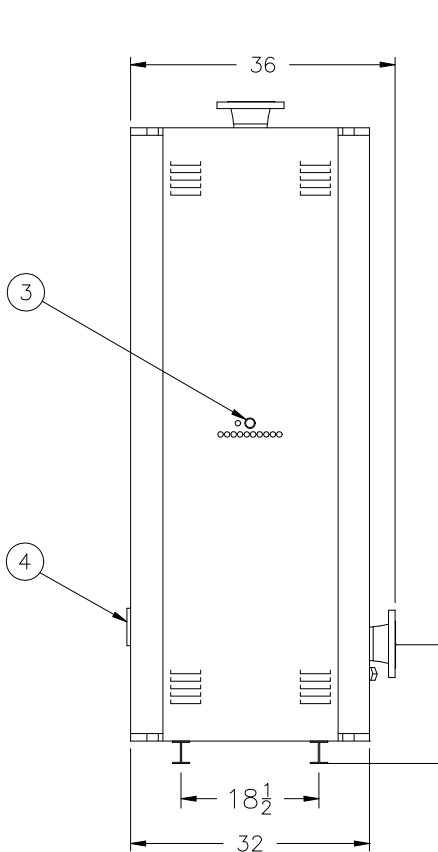
1. Controls and electrical enclosure
2. Dial pressure and temperature gauges
3. Control switch and fuse
4. Handhole cleanout
5. ASME-rated safety valve
6. Blowdown - 1" NPT
7. 3" I-Beam skid
8. Electrical entry



NOTES:

80 watts/in² elements are standard. For boilers with 40 watts/in² elements, substitute FWB for EWB in the model number. The kilowatts and model number prefix will be reduced to one-half that of 80 watts/in² models.

RIVERSIDE HYDRONICS RESERVES THE RIGHT TO CHANGE THE DESIGN AND SPECIFICATION WITHOUT NOTICE.



MINIMUM CLEARANCE

6" FROM SIDES, REAR AND TOP, 24" FROM FRONT.
ADDITIONAL CLEARANCE FOR SERVICE IS RECOMMENDED.